

As recorded by Jelly Roll Morton's Red Hot Peppers

BLACK BOTTOM STOMP

TROMBONE

Essential Jazz Editions Set #1:
New Orleans Jazz, 1918 - 1927

By FERDINAND "JELLY ROLL" MORTON

Transcribed by DON VAPPIE

Edited by CHUCK ISRAELS

♩ = approx. 126

1 * 2 3 4 5

6 7 8 9 10 11

12 13 14 15 16 17

18 19 20 21 25 26

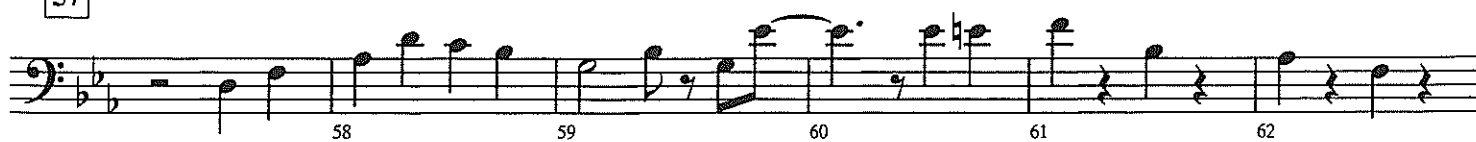
27 28 29 30 31 32

33 34 35 36 37 45 6

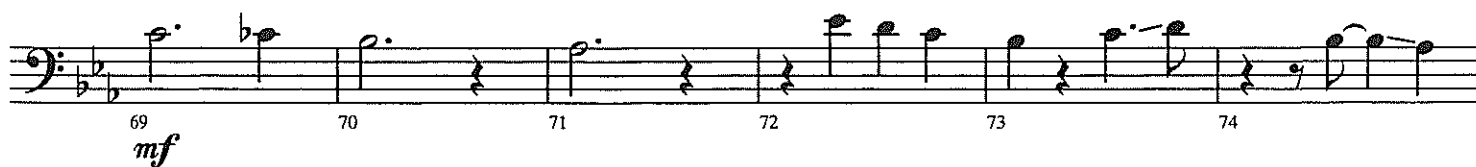
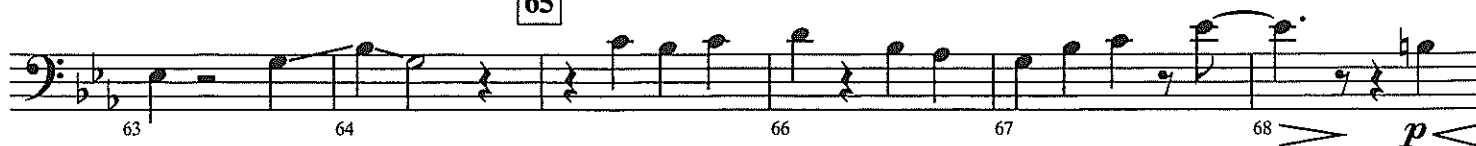
51 52 53 54 55 56

* Dynamic markings do not appear in the score and parts as the limitations of early technology made it impossible for the transcriber to discern dynamic variety from the recording. Use your own discretion to create dynamic variety throughout the piece.

57

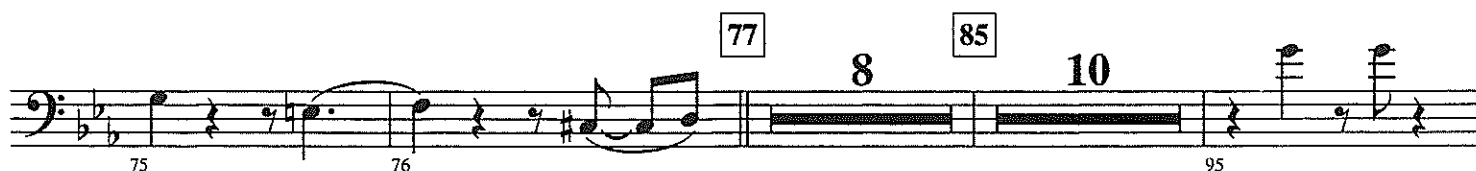


65



77

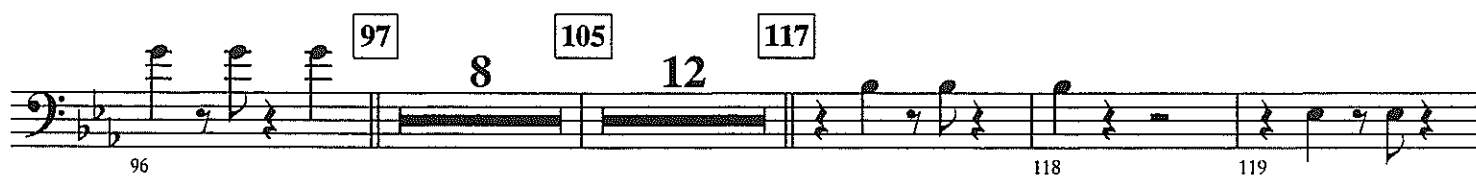
85



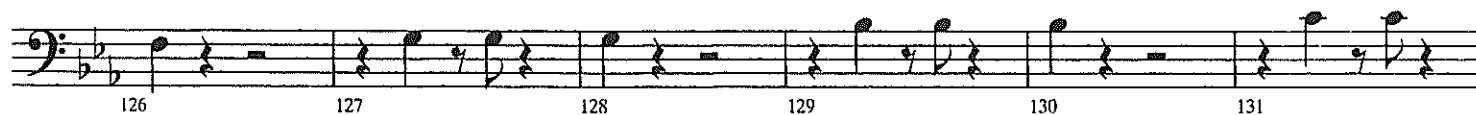
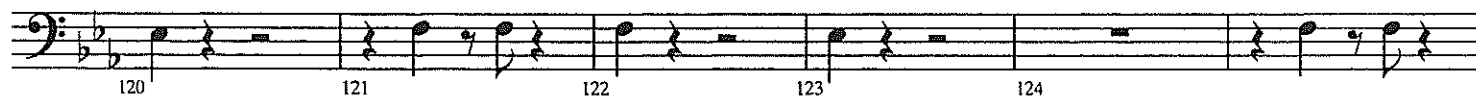
97

105

117



125



137 8 145 10 157

155 156 158

This musical staff contains measures 137 through 158. Measures 137 and 138 are marked with a box containing '137'. Measures 145 and 146 are marked with a box containing '145'. Measures 157 and 158 are marked with a box containing '157'. Above the staff, the numbers '8' and '10' are placed over measures 139-144 and 147-152 respectively. The staff shows a series of eighth and sixteenth notes in a descending and then ascending pattern.

159 160 161 162 163 164 165

159 160 161 162 163 164

This musical staff contains measures 159 through 164. Measure 165 is marked with a box containing '165'. The staff features a melodic line with a slur over measures 160-161 and a triplet of eighth notes in measure 163.

166 167 168 169 170 171

166 167 168 169 170 171

This musical staff contains measures 166 through 171. The staff shows a continuous melodic line with various note values and slurs.

172 173 174 175 176

172 173 174 175 176

This musical staff contains measures 172 through 176. The staff features a melodic line with a slur over measures 173-174 and a triplet of eighth notes in measure 175.

177 simile 178 179 180 181 182

177 178 179 180 181 182

This musical staff contains measures 177 through 182. Measure 177 is marked with a box containing '177'. Above the staff, the word 'simile' is written. Below the staff, there are dynamic markings: '< f >' and 'p' under measures 178 and 179, and '< f >' and 'p' under measures 180 and 181. The staff shows a melodic line with a slur over measures 177-178 and a triplet of eighth notes in measure 181.

183 184 185 186 187

183 184 185 186 187

This musical staff contains measures 183 through 187. Measure 185 is marked with a box containing '185'. Below the staff, there is a dynamic marking 'f' under measure 183. The staff shows a melodic line with a slur over measures 183-184 and a triplet of eighth notes in measure 185.

188 189 190 191 192 193

188 189 190 191 192 193

This musical staff contains measures 188 through 193. The staff shows a melodic line with a slur over measures 188-189 and a triplet of eighth notes in measure 192.

194 195 196 197 198

194 195 196 197 198

This musical staff contains measures 194 through 198. The staff shows a melodic line with a slur over measures 194-195 and a triplet of eighth notes in measure 197.